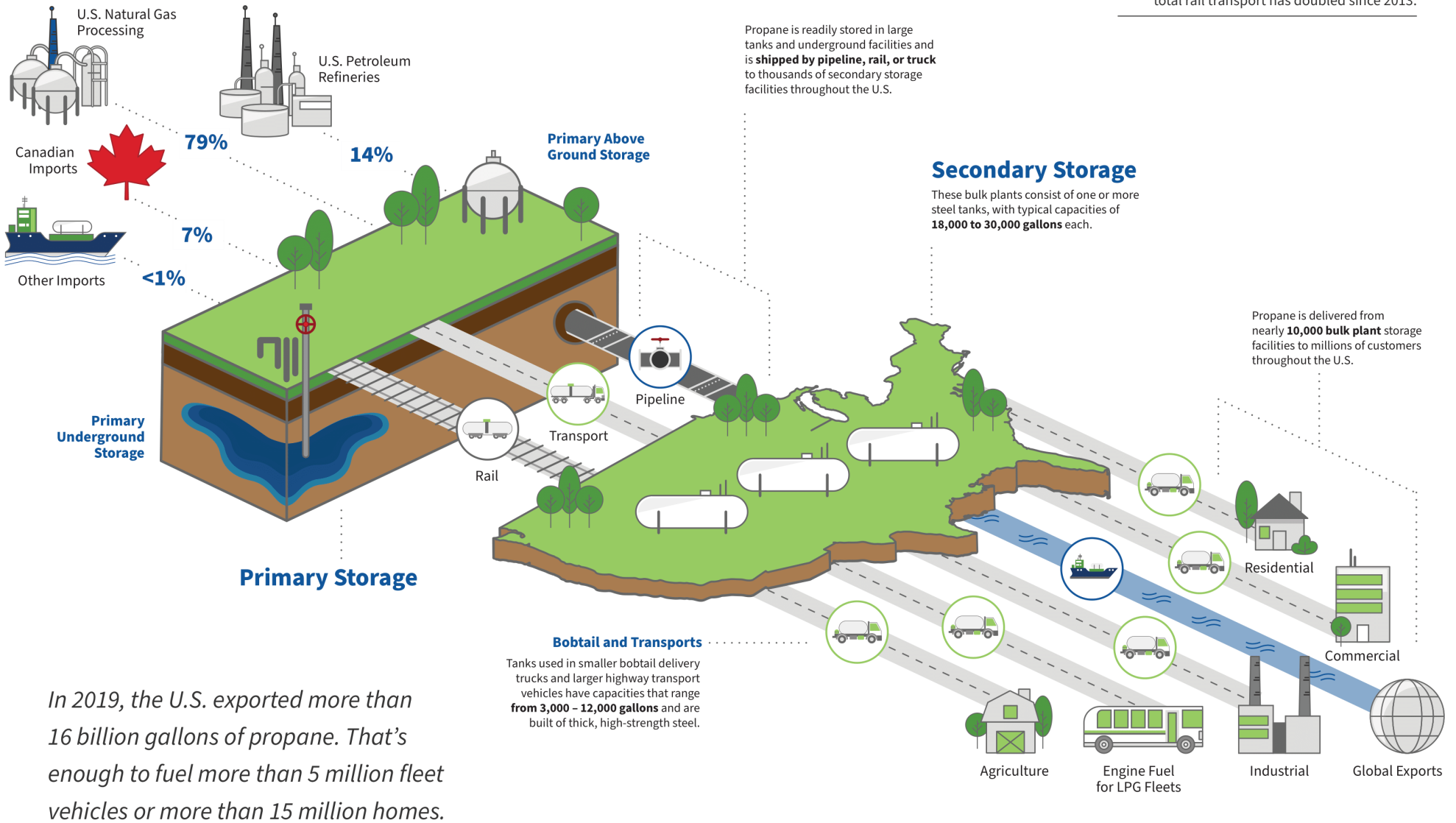


According to EIA data, total rail transport has doubled since 2013.



In 2019, the U.S. exported more than 16 billion gallons of propane. That's enough to fuel more than 5 million fleet vehicles or more than 15 million homes.

NATIONAL PROPANE GAS ASSOCIATION

1899 L Street NW, Suite 350 | Washington, D.C. 20036
202.466.7200 | www.npga.org